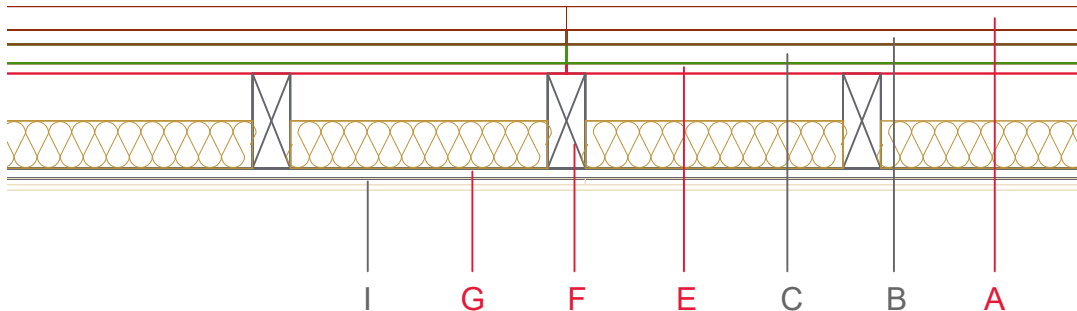
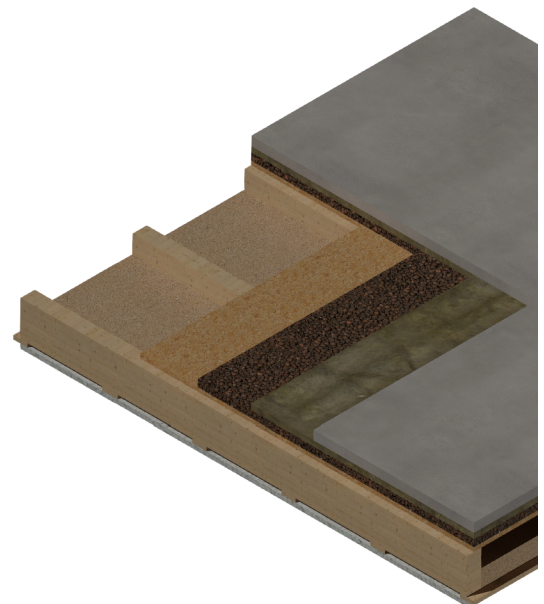


E3702-02



| | Material / Layer | Dimensions |
|---|---|--|
| A | Dry screed Egger OSB | |
| | Mastic asphalt screed | |
| | Cement screed | 50 |
| B | Impact-noise insulation | Rock wool 30 kg/m ³ - 30 |
| C | Weighting | Dry fill 72 kg/m ³ - 40 |
| D | Drip guard | x |
| E | EGGER OSB | 22 |
| F | Cellulose blow-in insulation 50 kg/m ³ | |
| | Glass wool 11 kg/m ³ Rock wool 30 kg/m ³ | |
| | Cellulose blow-in insulation 50 kg/m ³ | |
| | Insulating board 45 kg/m ³ | 100 |
| | Rock wool 30 kg/m ³ | |
| | + ceiling beam / Tram | 80x220 |
| G | Form board/ spring rail | 22 x 80, e=500, spring rail, e=400 |
| | Vapour barrier s _d | |
| H | EGGER OSB | |
| I | Gypsum board not effective in fire protection | |
| | Gypsum fire board | 2x 12.5 |
| | Gypsum fire board or Gypsum fibre board | |
| K | Gypsum fire board or Gypsum fibre board | |
| | Application area | Open beam ceiling with closed joists |
| | Fire resistance | REI60 |
| | Fire classification report | REI60 according to dataholz.at, partition ceiling tdrnxa03b (No. 4) |
| | Sound insulation R _w (C, C _{tr}) | 70 (0,-4) dB |
| | Sound insulation impact sound L _{n,w} | 41(0) dB |



Index: Vers. 1 (28.05.2020): Neuerstellung
 Vers. 2 (03.06.2020): Grafische Überarbeitung
 Vers. 3 (25.08.2022): Vereinfachung

Version 3; 25.08.2022
 Verantwortlicher: PM/AWT EBP