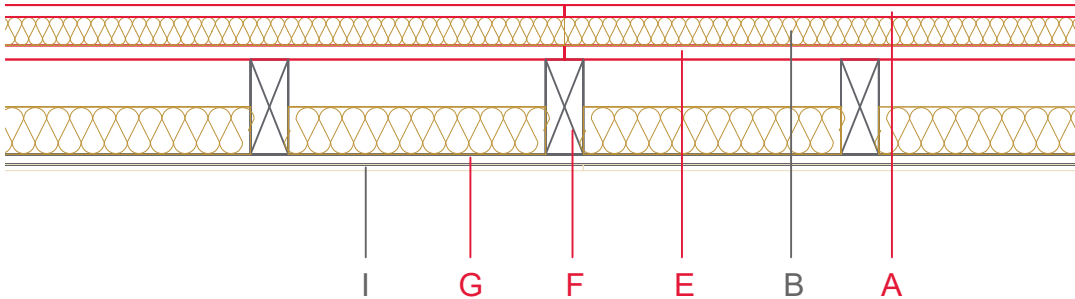


# E3701-03



	Material / Layer	Dimensions
A	Dry screed Egger OSB	
	Mastic asphalt screed	Egger OSB 12mm + 25
	Cement screed	
B	Impact-noise insulation	Rock wool 30 kg/m <sup>3</sup> - 40
C	Weighting	
D	Drip guard	
E	EGGER OSB	22
F	Cellulose blow-in insulation 50 kg/m <sup>3</sup>	
	Glass wool 11 kg/m <sup>3</sup>	
	Rock wool 30 kg/m <sup>3</sup>	
	Cellulose blow-in insulation 50 kg/m <sup>3</sup>	
	Insulating board 45 kg/m <sup>3</sup>	
	Rock wool 30 kg/m <sup>3</sup>	100
	+ ceiling beam / Tram	80x200
G	Form board/ spring rail	22 x 80, e=500, spring rail, e=400
	Vapour barrier s <sub>d</sub>	
H	EGGER OSB	
I	Gypsum board not effective in fire protection	
	Gypsum fire board	12,5
	Gypsum fire board or Gypsum fibre board	
K	Gypsum fire board or Gypsum fibre board	
	Application area	ten beam ceiling with closed joists
	Fire resistance	F30-B
	Fire classification report	Fire resistance F30-B according to DIN 4102-4, table 10.11, row 1
	Sound insulation R <sub>w</sub> (C, C <sub>tr</sub> )	> 54 dB
	Sound insulation impact sound L <sub>n,w</sub>	52 dB

