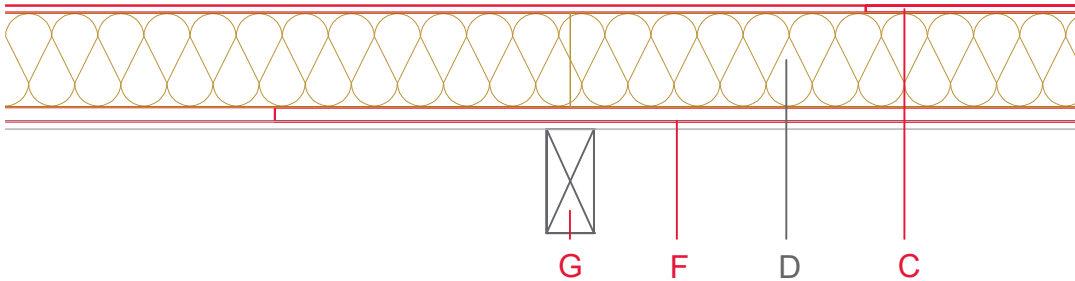


# E2504-03



	Material / Layer	Dimensions
A	Roofing	x
B	Ventilation	x
C	EGGER DHF	15
	EGGER OSB	
D	Foam plastic	
	Rock wool 30 kg/m <sup>3</sup>	
	Glass wool 11 kg/m <sup>3</sup>	
	Rock wool 30 kg/m <sup>3</sup>	
	Cellulose insulation 50 kg/m <sup>3</sup>	
	Insulating board 45 kg/m <sup>3</sup>	200
E	Vapour barrier s <sub>d</sub>	
F	EGGER OSB	30
	Boards or planks T&G	16
G	Insulation normal flammability	
	Rock wool 30 kg/m <sup>3</sup>	
	+ wood frame / ridge	3-sided combustion, e=1250 mm
H	Battens/form board	
K	Gypsum board not effective in fire protection	
	Gypsum fire board	
	Gypsum fire board or Gypsum fibre board	
	Application area	
	Roof design	Above-rafter insulation
	Fire resistance	F30-B
	Fire classification report	Fire resistance F30-B according to DIN 4102-4:2016, table 10.25, row 6
	Sound insulation Rw(c;ctr)	37 dB

