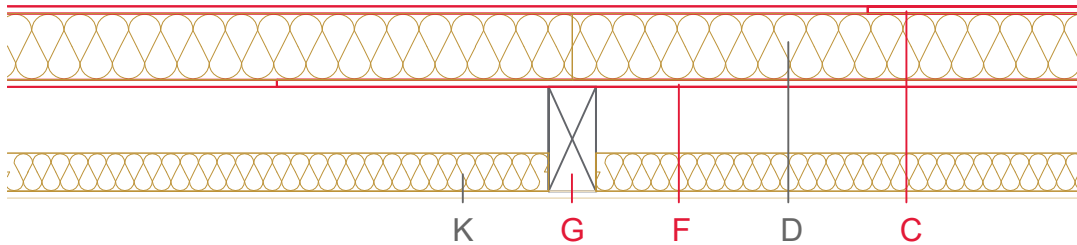


# E2503-03



	Material / Layer	Dimensions
A	Roofing	x
B	Ventilation	x
C	EGGER DHF	
	EGGER OSB	15
D	Foam plastic	
	Rock wool 30 kg/m <sup>3</sup>	
	Glass wool 11 kg/m <sup>3</sup>	
	Rock wool 30 kg/m <sup>3</sup>	
	Cellulose insulation 50 kg/m <sup>3</sup>	
	Insulating board 45 kg/m <sup>3</sup>	140
E	Vapour barrier s <sub>d</sub>	to be certified!
F	EGGER OSB	15
	Boards or planks T&G	
G	Insulation normal flammability	80
	Rock wool 30 kg/m <sup>3</sup>	
	+ wood frame / ridge	e=625 mm
H	Battens/form board	
K	Gypsum board not effective in fire protection	
	Gypsum fire board	15
	Gypsum fire board or Gypsum fibre board	
	Application area	
	Roof design	with over-insulation
	Fire resistance	F30-B
	Fire classification report	Fire resistance F30-B according to DIN 4102-4:2016, table 10.20, row 2
	Sound insulation R <sub>w</sub> (c;ctr)	50 dB

