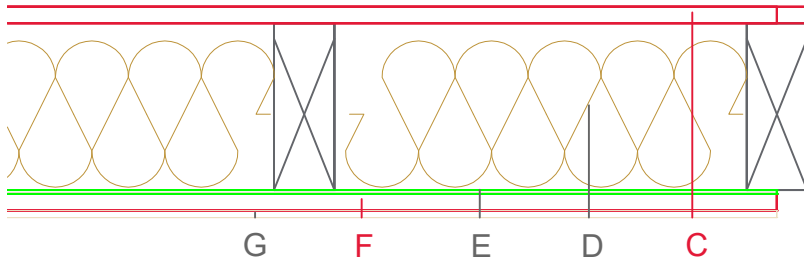


E2501-03



	Material / Layer	Dimensions
A	Roofing	x
B	Ventilation	
C	EGGER DHF	
	EGGER OSB	22
D	Cellulose blow-in insulation 50 kg/m ³	
	Glass wool 11 kg/m ³	
	Rock wool 30 kg/m ³	
	Cellulose insulation 50 kg/m ³	
	Insulating board 45 kg/m ³	220
	Rock wool 30 kg/m ³ + wood frame / ridge	80x220
E	Vapour barrier s _d	to be certified!
F	EGGER OSB	18
G	Gypsum board not effective in fire protection	9,5
	Gypsum fire board	
	Gypsum fire board or Gypsum fibre board	
H	Gypsum fire board or Gypsum fibre board	
	Application area	flat sloping
	Roof design	Full rafter insulation
	Fire resistance	F30-B
	Fire classification report	Fire resistance F30-B according to DIN 4102-4:2016, table 10.19, row 1
	Sound insulation Rw(c;ctr)	Rw > 35 dB
	Sound classification report	

