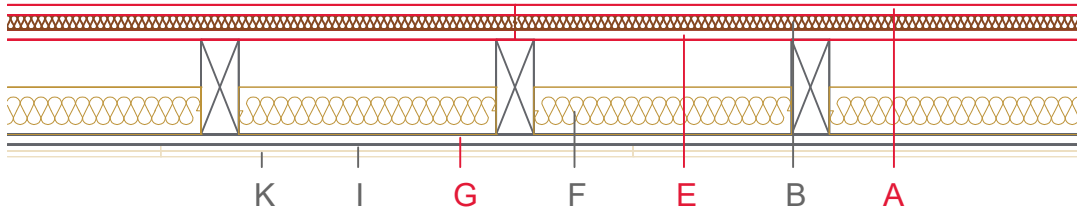


E3504-02



	Material / Layer	Dimensions
A	Dry screed Egger OSB	22
	Mastic asphalt screed	
	Cement screed	
B	Impact-noise insulation	normal flammability - 30
C	Weighting	
D	Drip guard	
E	EGGER OSB	22
F	Cellulose blow-in insulation 50 kg/m ³	
	Glass wool 11 kg/m ³	
	Rock wool 30 kg/m ³	
	Cellulose blow-in insulation 50 kg/m ³	
	Insulating board 45 kg/m ³	Glass wool - 100
	Rock wool 30 kg/m ³	
G	+ ceiling beam / Tram	80x200
	Form board/ spring rail	22 x 100, e=500
	Vapour barrier s _d	
H	EGGER OSB	
I	Gypsum board not effective in fire protection	
	Gypsum fire board	
	Gypsum fire board or Gypsum fibre board	12,5
K	Gypsum fire board or Gypsum fibre board	12,5
	Application area	Open beam ceiling with closed joists
	Fire resistance	REI60
	Fire classification report	Classification report HF Austria 2586/2018/26-BB
	Sound insulation R _w (C, C _{tr})	50 dB
	Sound insulation impact sound L _{n,w}	62 dB

