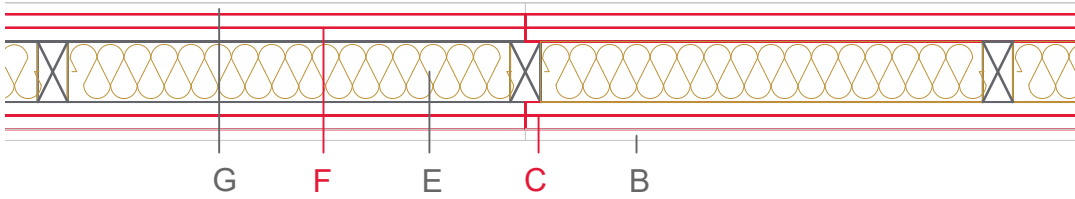


E1319-03



	Material / Layer	Dimensions
A	Gypsum fire board or gypsum fibre board	
B	Gypsum board - not effective in fire protection	
	Gypsum fire board or gypsum fibre board	15
C	EGGER OSB	2x18
	EGGER Ergo board	
D	Vapour barrier s _d optional	
E	Cellulose blow-in insulation 50 kg/m ³	
	Glass wool 11 kg/m ³	
	Rock wool 30 kg/m ³	
	Cellulose blow-in insulation 50 kg/m ³	
	Insulating board 45 kg/m ³	
	Mineral wool	50 kg/m ³ / 60
	Rock wool 30 kg/m ³	
	+ wood frame / ridge	40x80
F	EGGER Ergo board	
	EGGER DHF	
G	EGGER OSB	2x18
	Gypsum board - not effective in fire protection	
H	Gypsum fire board	15
	Gypsum fire board or gypsum fibre board	
	Gypsum fire board or gypsum fibre board	
	Gypsum fire board or gypsum fibre board	
	Application area	Building partition wall
	Fire resistance	F90-B
	Fire classification report	Fire resistance F90-B according to DIN 4102-4, table 10.6, row 18
	Sound insulation R _w (c;ctr)	46 dB

