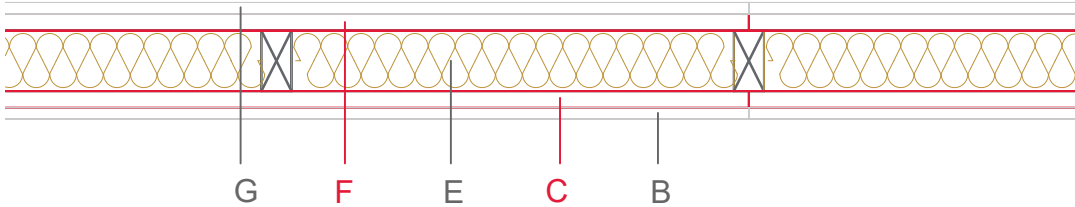


E1319-03a



	Material / Layer	Dimensions
A	Gypsum fire board or gypsum fibre board	
	Gypsum board - not effective in fire protection	
B	Gypsum fire board or gypsum fibre board	15
	Gypsum fire board or Gypsum fibre board	
C	EGGER OSB	22
	EGGER Ergoboard	
D	Vapour barrier s _d optional	
E	Cellulose blow-in insulation 50 kg/m ³	
	Glass wool 11 kg/m ³	
	Rock wool 30 kg/m ³	
	Cellulose blow-in insulation 50 kg/m ³	
	Insulating board 45 kg/m ³	
	Mineral wool	100 kg/m ³ / 60
	Rock wool 30 kg/m ³	
	+ wood frame / ridge	40x80
	EGGER Ergoboard	
F	EGGER DHF	
	EGGER OSB	22
	Gypsum board - not effective in fire protection	
G	Gypsum fire board	15
	Gypsum fire board or gypsum fibre board	
H	Gypsum fire board or gypsum fibre board	
	Application area	Building partition wall
	Fire resistance	F90-B
	Fire classification report	Fire resistance F90-B according to DIN 4102-4, table 10.6, row 19
	Sound insulation Rw(c;ctr)	49 dB

