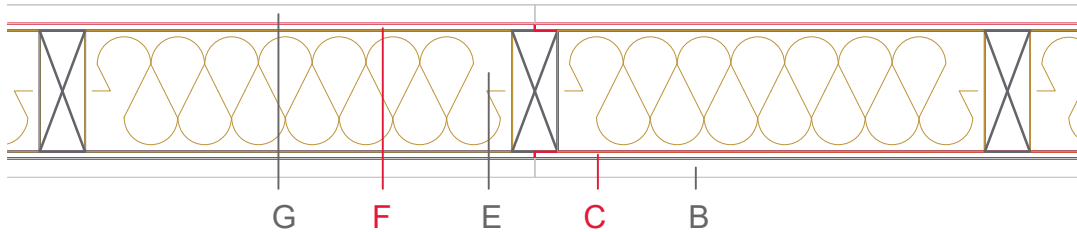


E1318-02



	Material / Layer	Dimensions
A	Gypsum fire board or gypsum fibre board	
	Gypsum board - not effective in fire protection	
B	Gypsum fire board or gypsum fibre board	25
	Gypsum fire board or Gypsum fibre board	
C	EGGER OSB	9
	EGGER Ergoboard	
D	Vapour barrier s _d optional	
	Cellulose blow-in insulation 50 kg/m ³	
	Glass wool 11 kg/m ³	
	Rock wool 30 kg/m ³	
	Cellulose blow-in insulation 50 kg/m ³	
E	Insulating board	
	45 kg/m ³	
	Mineral wool	
	Rock wool 30 kg/m ³	160
	+ wood frame / ridge	60x160
	EGGER Ergoboard	
F	EGGER DHF	
	EGGER OSB	9
	Gypsum board - not effective in fire protection	
G	Gypsum fire board	25
	Gypsum fire board or gypsum fibre board	
H	Gypsum fire board or gypsum fibre board	
	Application area	Building partition wall
	Fire resistance	REI90
	Fire classification report	Classification report HF Austria 2586/2018/24-BB
	Sound insulation R _w (c;ctr)	46 dB

