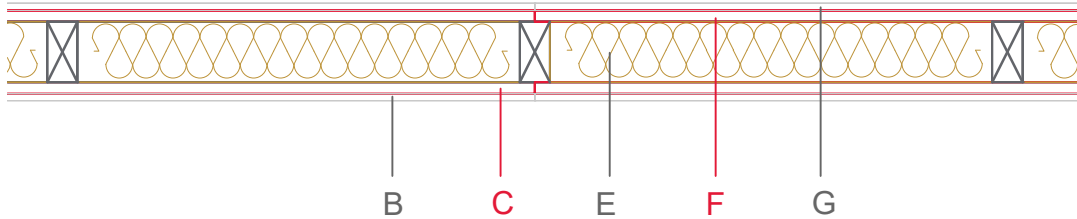


# E1315-03



	Material / Layer	Dimensions
<b>A</b>	Gypsum fire board or gypsum fibre board	
	Gypsum board - not effective in fire protection	
<b>B</b>	Gypsum fire board or gypsum fibre board	9,5
	Gypsum fire board or Gypsum fibre board	
<b>C</b>	EGGER OSB	15
	EGGER Ergoboard	
<b>D</b>	Vapour barrier s <sub>d</sub> optional	
<b>E</b>	Cellulose blow-in insulation 50 kg/m <sup>3</sup>	
	Glass wool 11 kg/m <sup>3</sup>	
	Rock wool 30 kg/m <sup>3</sup>	
	Cellulose blow-in insulation 50 kg/m <sup>3</sup>	80
	Insulating board 45 kg/m <sup>3</sup>	
	Mineral wool	
	Rock wool 30 kg/m <sup>3</sup>	
	+ wood frame / ridge	40x80
<b>F</b>	EGGER Ergoboard	
	EGGER DHF	
	EGGER OSB	15
<b>G</b>	Gypsum board - not effective in fire protection	
	Gypsum fire board	9,5
	Gypsum fire board or gypsum fibre board	
<b>H</b>	Gypsum fire board or gypsum fibre board	
	Application area	Interior wall
	Fire resistance	F30-B
	Fire classification report	Fire resistance F30-B according to DIN 4102-4:2016, table 10.5, row 7
	Sound insulation R <sub>w</sub> (c;ctr)	46 dB

