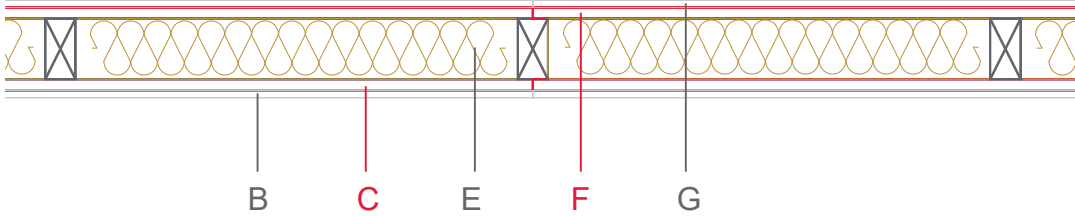


E1315-03



	Material / Layer	Dimensions
A	Gypsum fire board or gypsum fibre board	
	Gypsum board - not effective in fire protection	
B	Gypsum fire board or gypsum fibre board	GKB 9.5
	Gypsum fire board or Gypsum fibre board	
C	EGGER OSB	15
	EGGER Ergo board	
D	Vapour barrier s _d optional	
	Cellulose blow-in insulation 50 kg/m ³	
	Glass wool 11 kg/m ³	
	Rock wool 30 kg/m ³	
	Cellulose blow-in insulation 50 kg/m ³	
E	Insulating board 45 kg/m ³	80
	Mineral wool	
	Rock wool 30 kg/m ³	
	+ wood frame / ridge	40x80
	EGGER Ergo board	
F	EGGER DHF	
	EGGER OSB	15
	Gypsum board - not effective in fire protection	
G	Gypsum fire board	GKB 9.5
	Gypsum fire board or gypsum fibre board	
H	Gypsum fire board or gypsum fibre board	
	Application area	Interior wall
	Fire resistance	F30-B
	Fire classification report	Fire resistance F30-B according to DIN 4102-4:2016, table 10.5, row 7
	Sound insulation R _w (c;ctr)	46 dB

