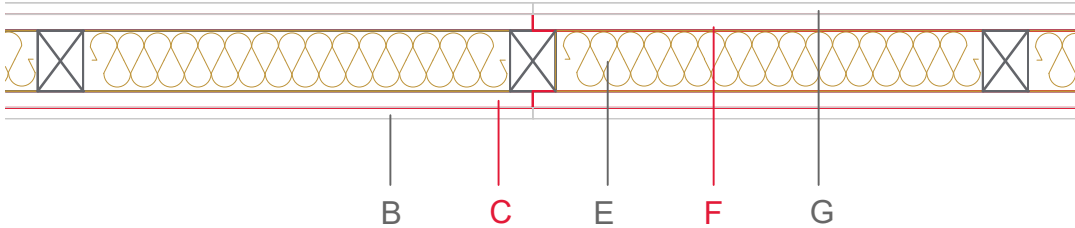


E1314-03



Material / Layer	Dimensions
A Gypsum fire board or gypsum fibre board	
Gypsum board - not effective in fire protection	
B Gypsum fire board or gypsum fibre board	15
Gypsum fire board or Gypsum fibre board	
C EGGER OSB	22
EGGER Ergoboard	
D Vapour barrier s _d optional	
Cellulose blow-in insulation 50 kg/m ³	
Glass wool 11 kg/m ³	
Rock wool 30 kg/m ³	
Cellulose blow-in insulation 50 kg/m ³	
E Insulating board	80
45 kg/m ³	
Mineral wool	
Rock wool 30 kg/m ³	
+ wood frame / ridge	40x80
EGGER Ergoboard	
F EGGER DHF	
EGGER OSB	22
Gypsum board - not effective in fire protection	
G Gypsum fire board	15
Gypsum fire board or gypsum fibre board	
H Gypsum fire board or gypsum fibre board	
Application area	Interior wall
Fire resistance	F60-B
Fire classification report	Fire resistance F30-B according to DIN 4102-4:2016, table 10.5, row 9
Sound insulation R _w (c;ctr)	46 dB

