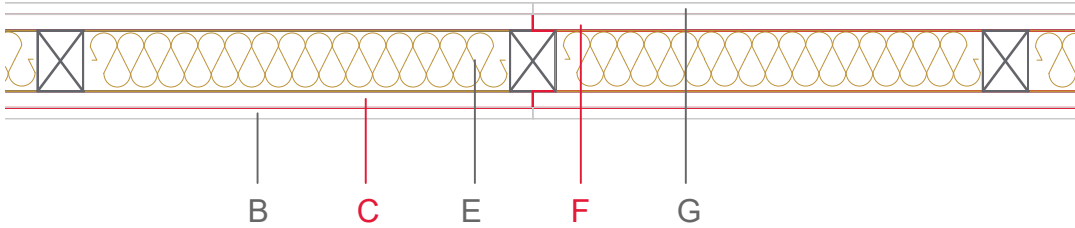


E1314-03



	Material / Layer	Dimensions
A	Gypsum fire board or gypsum fibre board	
B	Gypsum board - not effective in fire protection	
	Gypsum fire board or gypsum fibre board	GKB 18
C	EGGER OSB	22
	EGGER Ergoboard	
D	Vapour barrier s _d optional	
E	Cellulose blow-in insulation 50 kg/m ³	
	Glass wool 11 kg/m ³	
	Rock wool 30 kg/m ³	
	Cellulose blow-in insulation 50 kg/m ³	80
	Insulating board 45 kg/m ³	
	Mineral wool	
	Rock wool 30 kg/m ³	
	+ wood frame / ridge	40x80
F	EGGER Ergoboard	
	EGGER DHF	
	EGGER OSB	22
G	Gypsum board - not effective in fire protection	
	Gypsum fire board	GKB 18
	Gypsum fire board or gypsum fibre board	
H	Gypsum fire board or gypsum fibre board	
	Application area	Interior wall
	Fire resistance	F60-B
	Fire classification report	Fire resistance F30-B according to DIN 4102-4:2016, table 10.5, row 9
	Sound insulation R _w (c;ctr)	46 dB

