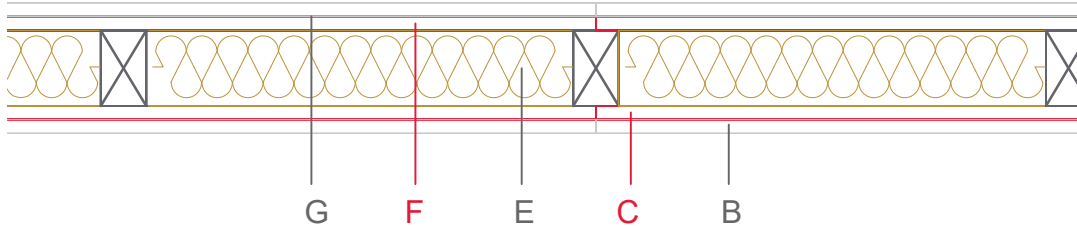


# E1312-03



	Material / Layer	Dimensions
<b>A</b>	Gypsum fire board or gypsum fibre board	
<b>B</b>	Gypsum board - not effective in fire protection	
	Gypsum fire board or gypsum fibre board	12,5
<b>C</b>	EGGER OSB	18
	EGGER Ergo board	
<b>D</b>	Vapour barrier s <sub>d</sub> optional	
<b>E</b>	Cellulose blow-in insulation 50 kg/m <sup>3</sup>	
	Glass wool 11 kg/m <sup>3</sup>	
	Rock wool 30 kg/m <sup>3</sup>	
	Cellulose blow-in insulation 50 kg/m <sup>3</sup>	
	Insulating board 45 kg/m <sup>3</sup>	
	Mineral wool	50 kg/m <sup>3</sup> / 60
	+ wood frame / ridge	40x80
<b>F</b>	EGGER Ergo board	
	EGGER DHF	
	EGGER OSB	18
<b>G</b>	Gypsum board - not effective in fire protection	
	Gypsum fire board	12,5
	Gypsum fire board or gypsum fibre board	
<b>H</b>	Gypsum fire board or gypsum fibre board	
	Application area	Interior wall
	Fire resistance	F60-B
	Fire classification report	Fire resistance F60-B according to DIN 4102-4:2016, table 10.6, Z 7
	Sound insulation R <sub>w</sub> (c;ctr)	37 (-2,-7) dB

