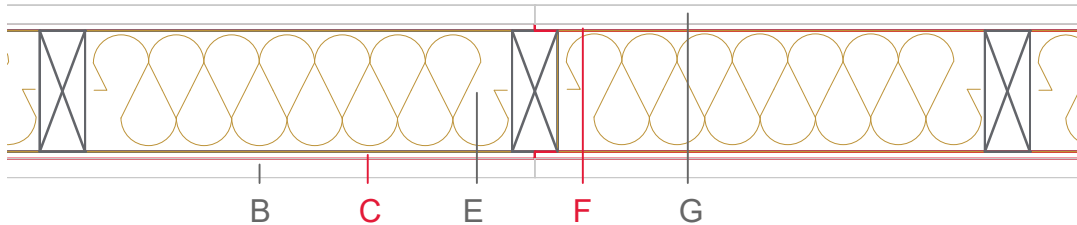


E1302-02



	Material / Layer	Dimensions
A	Gypsum fire board or gypsum fibre board	
B	Gypsum board - not effective in fire protection	
	Gypsum fire board or gypsum fibre board	25
C	EGGER OSB	9
	EGGER Ergoboard	
D	Vapour barrier s_d optional	
E	Cellulose blow-in insulation 50 kg/m ³	
	Glass wool 11 kg/m ³	
	Rock wool 30 kg/m ³	
	Cellulose blow-in insulation 50 kg/m ³	
	Insulating board 45 kg/m ³	
	Mineral wool	
	Rock wool 30 kg/m ³	160
	+ wood frame / ridge	60x160
F	EGGER Ergoboard	
	EGGER DHF	
	EGGER OSB	9
G	Gypsum board - not effective in fire protection	
	Gypsum fire board	25
	Gypsum fire board or gypsum fibre board	
H	Gypsum fire board or gypsum fibre board	
	Application area	Building partition wall
	Fire resistance	REI90
	Fire classification report	Classification report HF Austria KB_2586/2018/24-BB
	Sound insulation $R_w(c;ctr)$	49 dB

