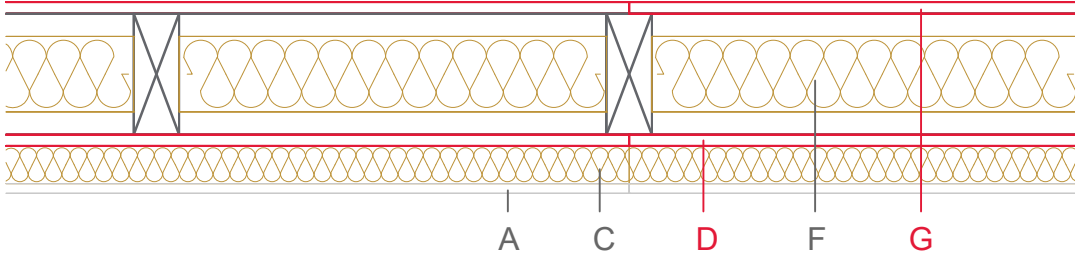


# E1158-02a



	Material / Layer	Dimensions
A	Gypsum fire board oder Gypsum fibre board	
	Gypsum fire board	12,5
	Gypsum board - not effective in fire protection	
B	Gypsum fire board oder Gypsum fibre board	
	Gypsum fire board oder Gypsum fibre board	
C	Installation level	without
D	EGGER OSB	
E	Vapour barrier $s_d$	
F	Cellulose blow-in insulation 55 kg/m <sup>3</sup>	
	Glass wool 11 kg/m <sup>3</sup>	
	Rock wool 30 kg/m <sup>3</sup>	
	Cellulose blow-in insulation 50 kg/m <sup>3</sup>	
	Insulating board 45 kg/m <sup>3</sup>	Glass wool - 100
	Rock wool 30 kg/m <sup>3</sup>	
	Rock wool 100 kg/m <sup>3</sup>	
	+ Wood frame / ridge	60x 160
G	EGGER DHF	15
	EGGER OSB	
H	Insulating board	
	Weather protection	Ventilated façade
	Application area	
	Fire resistance	REI30
	Fire classification report	Classification report HF Austria 2586/2018/15-BB
	Sound insulation R'w	Rw ≤43 dB

