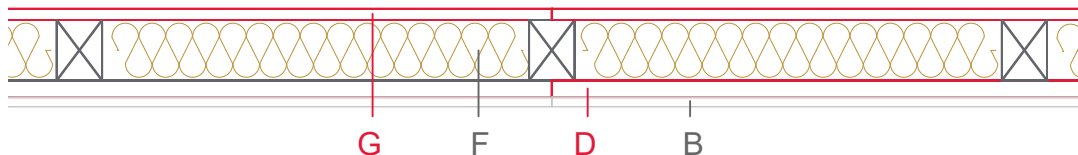




E1112-03



	Material / Layer	Dimensions
A	Gypsum fire board oder Gypsum fibre board	12,5
	Gypsum fire board	
	Gypsum fire board	
B	Gypsum board - not effective in fire protection	
	Gypsum fire board	
	Gypsum fire board oder Gypsum fibre board	
C	Installation level	
D	EGGER OSB	22
E	Vapour barrier s_d	
F	Cellulose blow-in insulation 55 kg/m ³	80
	Glass wool 11 kg/m ³	
	Rock wool 30 kg/m ³	
	Cellulose blow-in insulation 50 kg/m ³	
	Insulating board 45 kg/m ³	
	Rock wool 30 kg/m ³	
	Rock wool 100 kg/m ³	
+ Wood frame / ridge		
G	EGGER DHF	15
	EGGER OSB	
H	Insulating board	Ventilated façade
	Weather protection	
	Application area	
	Fire resistance	F60-B
	Fire classification report	Fire resistance F60-B according to DIN 4102-4, table 10.8, row 1
	Sound insulation R' _w	48-57 dB

