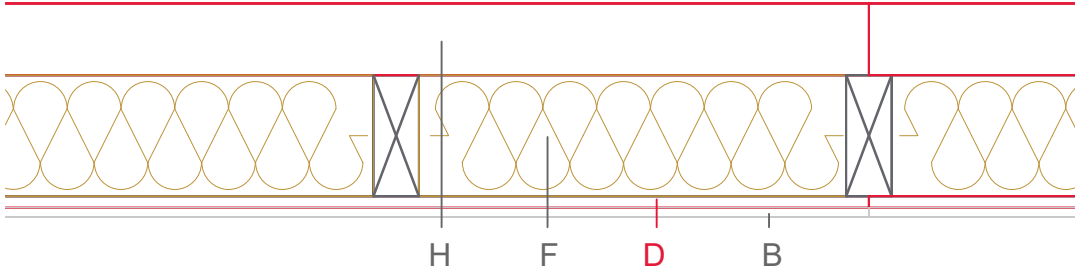


E1110-02



	Material / Layer	Dimensions
A	Gypsum fire board oder Gypsum fibre board	
	Gypsum fire board	
B	Gypsum board - not effective in fire protection	
	Gypsum fire board oder Gypsum fibre board	12,5
C	Installation level	
D	EGGER OSB	15
E	Vapour barrier s_d	
F	Cellulose blow-in insulation 55 kg/m ³	
	Glass wool 11 kg/m ³	
	Rock wool 30 kg/m ³	
	Cellulose blow-in insulation 50 kg/m ³	
	Insulating board 45 kg/m ³	160
	Rock wool 30 kg/m ³	
G	EGGER DHF	
	EGGER OSB	
H	Insulating board	≥ 80
	Weather protection	WDVS - HF
	Application area	
	Fire resistance	REI60
	Fire classification report	Classification report HF Austria 2586/2018/16-BB
	Sound insulation R'w	48 dB

