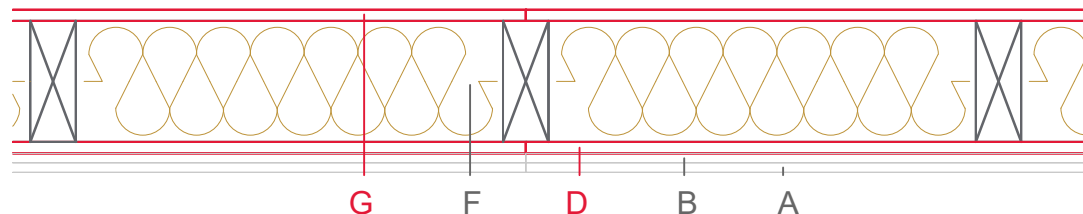


E1109-02



	Material / Layer	Dimensions
A	Gypsum fire board oder Gypsum fibre board	
	Gypsum fire board	
	Gypsum fire board	
B	Gypsum board - not effective in fire protection	
	Gypsum fire board	
	Gypsum fire board oder Gypsum fibre board	12,5
C	Installation level	without
D	EGGER OSB	15
E	Vapour barrier s_d	
F	Cellulose blow-in insulation 55 kg/m ³	
	Glass wool 11 kg/m ³	
	Rock wool 30 kg/m ³	
	Cellulose blow-in insulation 50 kg/m ³	
	Insulating board 45 kg/m ³	100
	Rock wool 30 kg/m ³	
	Rock wool 100 kg/m ³	
	+ Wood frame / ridge	60x160
G	EGGER DHF	15
	EGGER OSB	
H	Insulating board	
	Weather protection	Ventilated façade
	Application area	Exterior wall
	Fire resistance	REI30
	Fire classification report	Classification report HF Austria 2586/2018/15
	Sound insulation R'w	≤ 44 dB

