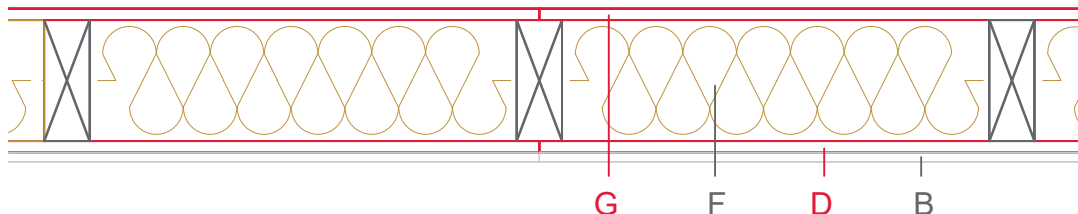


# E1108-02



	Material / Layer	Dimensions
A	Gypsum fire board oder Gypsum fibre board	
	Gypsum fire board	
	Gypsum fire board	
B	Gypsum board - not effective in fire protection	
	Gypsum fire board	
	Gypsum fire board oder Gypsum fibre board	12,5
C	Installation level	without
D	EGGER OSB	12
E	Vapour barrier $s_d$	
F	Cellulose blow-in insulation 55 kg/m <sup>3</sup>	
	Glass wool 11 kg/m <sup>3</sup>	
	Rock wool 30 kg/m <sup>3</sup>	
	Cellulose blow-in insulation 50 kg/m <sup>3</sup>	
	Insulating board 45 kg/m <sup>3</sup>	100
	Rock wool 30 kg/m <sup>3</sup>	
	Rock wool 100 kg/m <sup>3</sup>	
	+ Wood frame / ridge	60x160
G	EGGER DHF	15
	EGGER OSB	
H	Insulating board	
	Weather protection	Ventilated façade
	Application area	Exterior wall
	Fire resistance	REI45
	Fire classification report	Classification report HF Austria 2586/2018/18
	Sound insulation R'w	≤44 dB

