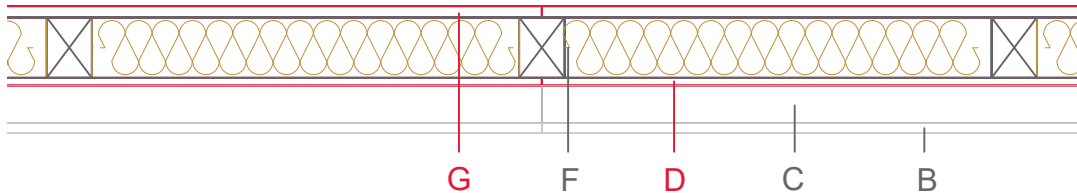


E1105-03b



	Material / Layer	Dimensions
A	Gypsum fire board oder Gypsum fibre board	
	Gypsum fire board	
	Gypsum fire board	
B	Gypsum board - not effective in fire protection	12,5 mm
	Gypsum fire board	
	Gypsum fire board oder Gypsum fibre board	
C	Installation level	with
D	EGGER OSB	10 mm
E	Vapour barrier s_d	
F	Cellulose blow-in insulation 55 kg/m ³	
	Glass wool 11 kg/m ³	
	Rock wool 30 kg/m ³	
	Cellulose blow-in insulation 50 kg/m ³	
	Insulating board 45 kg/m ³	
	Rock wool 30 kg/m ³	100 mm
	Rock wool 100 kg/m ³	
	+ Wood frame / ridge	60x120
G	EGGER DHF	15 mm
	EGGER OSB	
H	Insulating board	
	Weather protection	Masonry facing + UDB
	Application area	Exterior wall
	Fire resistance	F30-B
	Fire classification report	Fire resistance F30-B according to DIN 4102-4
	Sound insulation R' _w	≤52 dB

