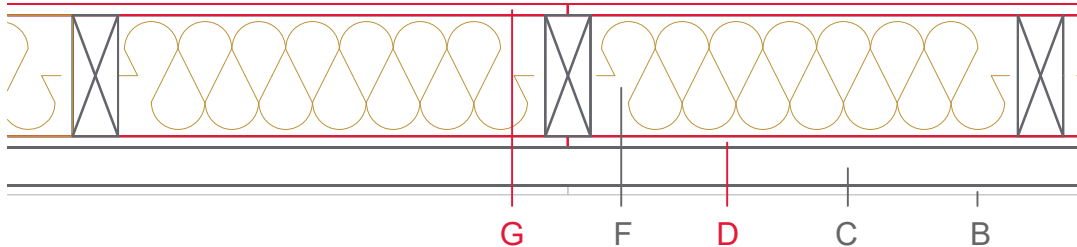


E1102-03c



	Material / Layer	Dimensions	
A	Gypsum fire board oder Gypsum fibre board		
	Gypsum fire board		
	Gypsum board - not effective in fire protection	12,5	
B	Gypsum fire board		
	Gypsum fire board oder Gypsum fibre board		
	Installation level	not insulated - 50	
C	EGGER OSB	15	
D	Vapour barrier s_d		
F	Cellulose blow-in insulation 55 kg/m ³	160	
	Glass wool 11 kg/m ³ Rock wool 30 kg/m ³ Cellulose blow-in insulation 50 kg/m ³ Insulating board 45 kg/m ³		
	Rock wool 30 kg/m ³		
	Rock wool 100 kg/m ³		
	+ Wood frame / ridge		
	G	EGGER DHF	15
	H	EGGER OSB	
H	Insulating board		
	Weather protection	Ventilated façade	
	Application area		
	Fire resistance	F30-B	
	Fire classification report	General construction inspection certificate MFPA P-SAC-02/III-752	
	Sound insulation R' _w	R _w ≤43 dB	

