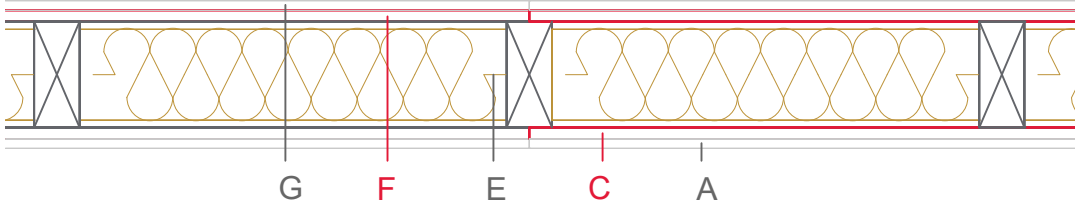


E1307-02a



	Material / Layer	Dimensions
A	Gypsum fire board or gypsum fibre board	12,5
B	Gypsum board - not effective in fire protection	
	Gypsum fire board or gypsum fibre board	
C	EGGER OSB	15
	EGGER Ergoboard	
D	Vapour barrier s _d optional	approx. 5 m
E	Cellulose blow-in insulation 50 kg/m ³	120
	Glass wool 11 kg/m ³	
	Rock wool 30 kg/m ³	
	Cellulose blow-in insulation 50 kg/m ³	
	Insulating board 45 kg/m ³	
	Mineral wool	
	Rock wool 30 kg/m ³	
	+ wood frame / ridge	60x140
F	EGGER Ergoboard	
	EGGER DHF	
	EGGER OSB	15
G	Gypsum board - not effective in fire protection	
	Gypsum fire board	12,5
H	Gypsum fire board or gypsum fibre board	
	Application area	Interior wall
	Fire resistance	REI30
	Fire classification report	Classification report HF Austria 2586/2018/23-BB
	Sound insulation R _w (c;ctr)	47 (-2,-6) dB

