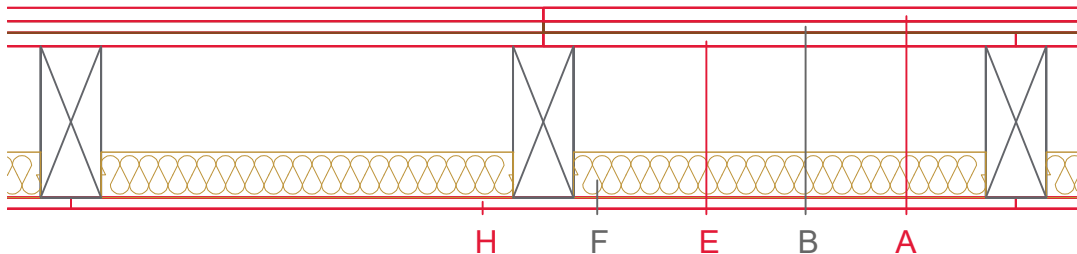
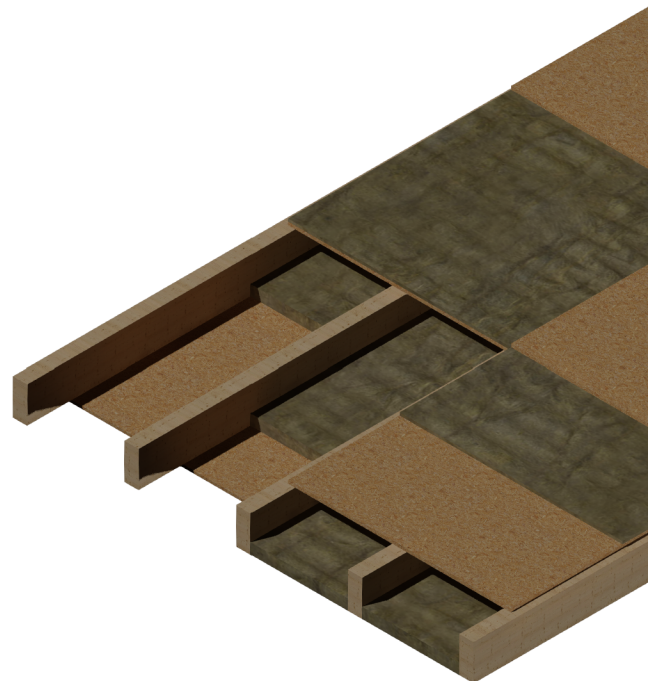


E3501-03



	Material / Layer	Dimensions
	Dry screed Egger OSB	18
A	Mastic asphalt screed	
	Cement screed	
B	Impact-noise insulation	Rock wool 30 kg/m ³ - 15
C	Weighting	
D	Drip guard	
E	EGGER OSB	15
F	Cellulose blow-in insulation 50 kg/m ³	
	Glass wool 11 kg/m ³	
	Rock wool 30 kg/m ³	
	Cellulose blow-in insulation 50 kg/m ³	
	Insulating board 45 kg/m ³	
	Rock wool 30 kg/m ³	60
	+ ceiling beam / Tram	
G	Form board/ spring rail	
	Vapour barrier s _d	
H	EGGER OSB	15
I	Gypsum board not effective in fire protection	
	Gypsum fire board	
	Gypsum fire board or Gypsum fibre board	
K	Gypsum fire board or Gypsum fibre board	
	Gypsum fire board or Gypsum fibre board	
	Application area	Wooden beam ceiling with closed
	Fire resistance	F30-B
	Fire classification report	Fire resistance F30-B according to DIN 4102-4, table 10.11, row 2
	Sound insulation R _w (C, C _{tr})	
	Sound insulation impact sound L _{n,w}	



Index: Vers. 1 (28.05.2020): Neuerstellung

Vers. 2 (03.06.2020): Grafische Überarbeitung

Vers. 3 (08.04.2022): Vereinfachung

Version 3; 08.04.2022

Verantwortlicher: PM/AWT EBP