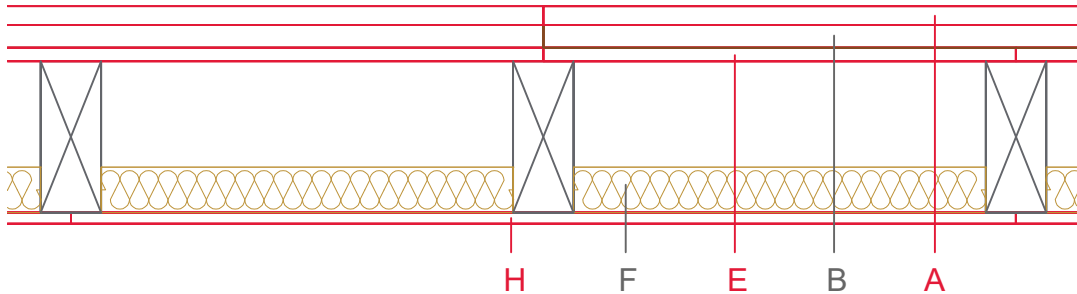


E3501-03a



	Material / Layer	Dimensions
	Dry screed Egger OSB	25
A	Mastic asphalt screed	
	Cement screed	
B	Impact-noise insulation	Rock wool 30 kg/m ³ - 30
C	Weighting	
D	Drip guard	
E	EGGER OSB	15
F	Cellulose blow-in insulation 50 kg/m ³	
	Glass wool 11 kg/m ³	
	Rock wool 30 kg/m ³	
	Cellulose blow-in insulation 50 kg/m ³	
	Insulating board 45 kg/m ³	
	Rock wool 30 kg/m ³ + ceiling beam / Tram	60
G	Form board/ spring rail	
	Vapour barrier s _d	
H	EGGER OSB	15
I	Gypsum board not effective in fire protection	
	Gypsum fire board	
	Gypsum fire board or Gypsum fibre board	
K	Gypsum fire board or Gypsum fibre board	
	Gypsum fire board or Gypsum fibre board	
	Application area	Wooden beam ceiling with closed
	Fire resistance	F30-B
	Fire classification report	Fire resistance F30-B according to DIN 4102-4, table 10.11, row 2
	Sound insulation R _w (C, C _{tr})	approx. 51 dB
	Sound insulation impact sound L _{n,w}	approx. 66 dB

