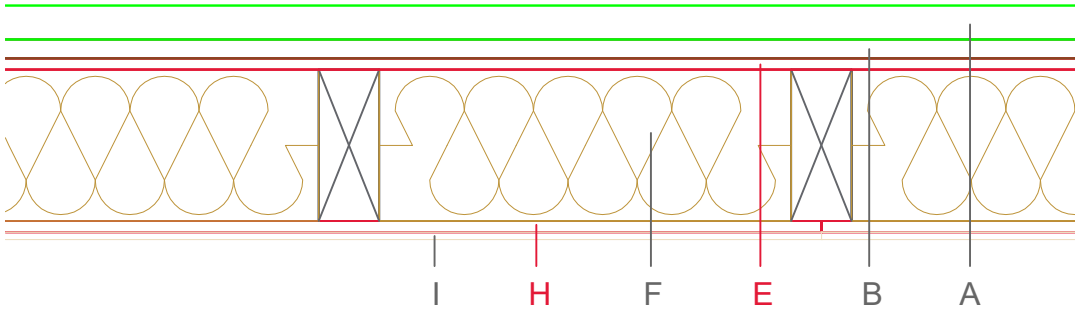


# E3501-01b



	Material / Layer	Dimensions
A	Dry screed Egger OSB	
	Mastic asphalt screed	
	Cement screed	45
B	Impact-noise insulation	Rock wool 30 kg/m <sup>3</sup> - 25
C	Weighting	
D	Drip guard	
E	EGGER OSB	18
F	Cellulose blow-in insulation 50 kg/m <sup>3</sup>	
	Glass wool 11 kg/m <sup>3</sup>	
	Rock wool 30 kg/m <sup>3</sup>	
	Cellulose blow-in insulation 50 kg/m <sup>3</sup>	
	Insulating board 45 kg/m <sup>3</sup>	200
	Rock wool 30 kg/m <sup>3</sup>	
	+ ceiling beam / Tram	
G	Form board/ spring rail	
	Vapour barrier s <sub>d</sub>	
H	EGGER OSB	15
I	Gypsum board not effective in fire protection	
	Gypsum fire board	9,5
	Gypsum fire board or Gypsum fibre board	
K	Gypsum fire board or Gypsum fibre board	
	Application area	Wooden beam ceiling with closed
	Fire resistance	E10
	Fire classification report	without
	Sound insulation R <sub>w</sub> (C, C <sub>tr</sub> )	approx. 69 dB
	Sound insulation impact sound L <sub>n,w</sub>	approx. 72 dB

