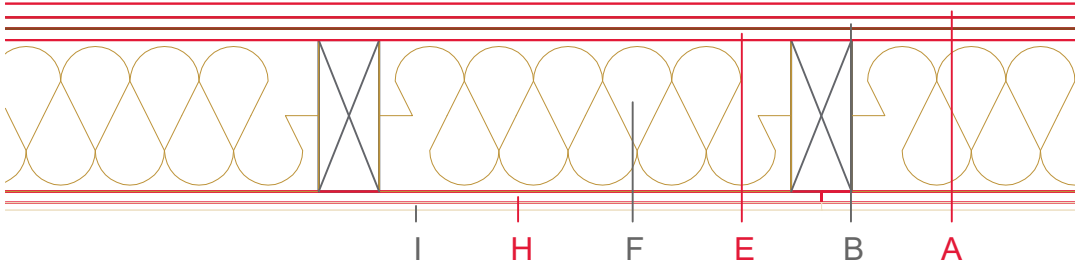
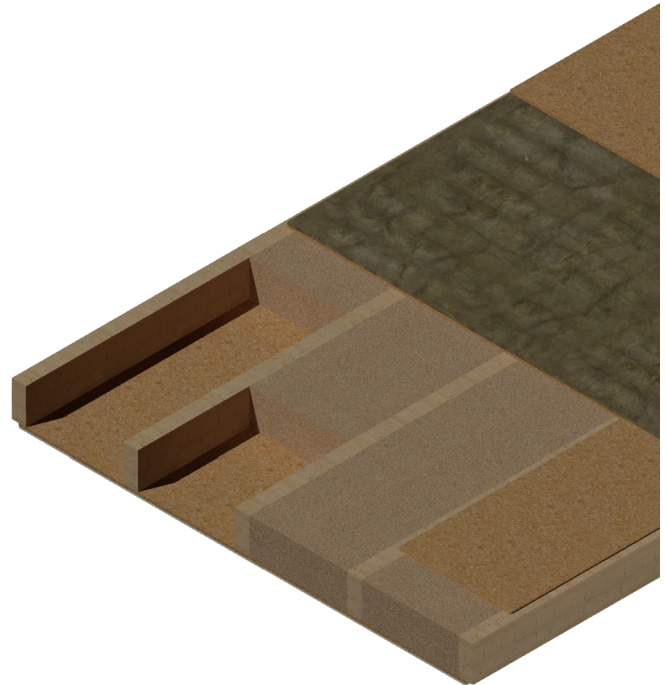


E3501-01a



	Material / Layer	Dimensions
	Dry screed Egger OSB	18
A	Mastic asphalt screed	
	Cement screed	
B	Impact-noise insulation	Rock wool 30 kg/m ³ - 15
C	Weighting	
D	Drip guard	
E	EGGER OSB	15
F	Cellulose blow-in insulation 50 kg/m ³	
	Glass wool 11 kg/m ³	
	Rock wool 30 kg/m ³	
	Cellulose blow-in insulation 50 kg/m ³	
	Insulating board 45 kg/m ³	200
	Rock wool 30 kg/m ³ + ceiling beam / Tram	
G	Form board/ spring rail	
	Vapour barrier s _d	
H	EGGER OSB	15
I	Gypsum board not effective in fire protection	
	Gypsum fire board	9,5
	Gypsum fire board or Gypsum fibre board	
K	Gypsum fire board or Gypsum fibre board	
	Application area	Timber beam ceiling
	Fire resistance	EI0
	Fire classification report	without
	Sound insulation R _w (C, C _{tr})	approx. 69 dB
	Sound insulation impact sound L _{n,w}	approx. 72 dB



Index: Vers. 1 (28.05.2020): Neuerstellung
 Vers. 2 (03.06.2020): Grafische Überarbeitung
 Vers. 3 (30.05.2022): Vereinfachung

Version 3; 30.05.2022
 Verantwortlicher: PM/AWT EBP