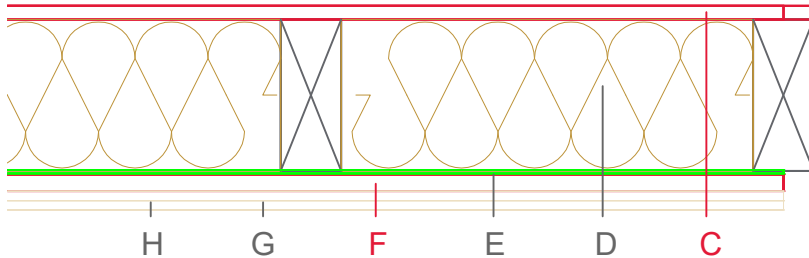


E2501-02



	Material / Layer	Dimensions
A	Roofing	x
B	Ventilation	x
C	EGGER DHF	
	EGGER OSB	22
D	Cellulose blow-in insulation 50 kg/m ³	
	Glass wool 11 kg/m ³	
	Rock wool 30 kg/m ³	
	Cellulose insulation 50 kg/m ³	
	Insulating board 45 kg/m ³	180
	Rock wool 30 kg/m ³ + wood frame / ridge	180
E	Vapour barrier s _d	20m
F	EGGER OSB	22
G	Gypsum board not effective in fire protection	
	Gypsum fire board	
	Gypsum fire board or Gypsum fibre board	12,5
H	Gypsum fire board or Gypsum fibre board	12,5
	Application area	
	Roof design	Full rafter insulation
	Fire resistance	REI60
	Fire classification report	Classification report HF Austria 2586/2018/26-BB
	Sound insulation Rw(c;ctr)	50 dB
	Sound classification report	DIN 4109-33:2016, table 14, row 2

