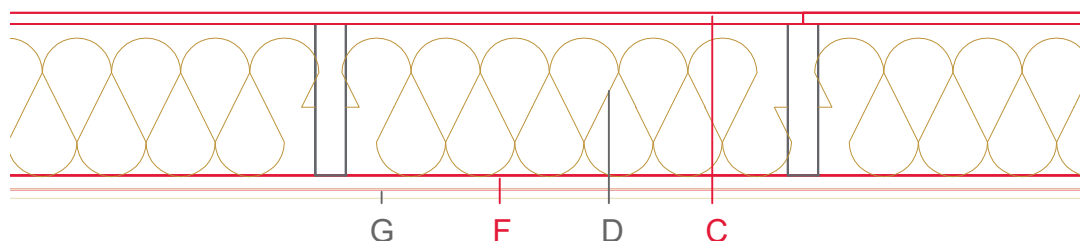


E2102-03



	Material / Layer	Dimensions
A	Roofing	x
B	Ventilation	x
C	EGGER DHF	15
	EGGER OSB	
D	Cellulose blow-in insulation 50 kg/m ³	
	Glass wool 11 kg/m ³	
	Rock wool 30 kg/m ³	
	Cellulose insulation 50 kg/m ³	
	Insulating board 45 kg/m ³	200
	Rock wool 30 kg/m ³ + wood frame / ridge	200
E	Vapour barrier s _d	
F	EGGER OSB	18
G	Gypsum board not effective in fire protection	
	Gypsum fire board	12,5
	Gypsum fire board or Gypsum fibre board	
H	Gypsum fire board or Gypsum fibre board	
	Application area	
	Roof design	Full rafter insulation
	Fire resistance	F30-B
	Fire classification report	Fire resistance F30-B according to DIN 4102-4:2016, table 10.20, row 2
	Sound insulation Rw(c;ctr)	52 (-3,-10) dB
	Sound classification report	DIN 4109-33:2016, table 12, row 2

