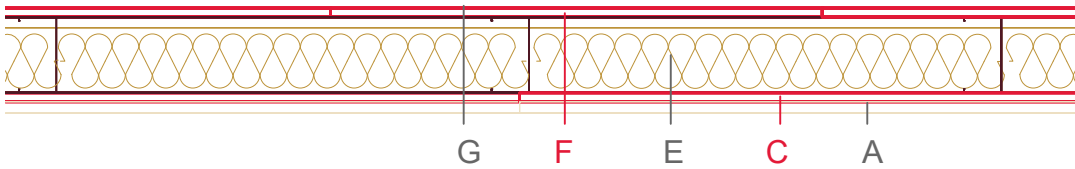


# E1403-02



	Material / Layer	Dimensions
A	Gypsum fire board or gypsum fibre board	
B	Gypsum board - not effective in fire protection	
	Gypsum fire board or gypsum fibre board	15
C	EGGER OSB	
	EGGER Ergoboard	12
D	Vapour barrier s <sub>d</sub> optional	
E	Cellulose blow-in insulation 50 kg/m <sup>3</sup>	
	Glass wool 11 kg/m <sup>3</sup>	
	Rock wool 30 kg/m <sup>3</sup>	
	Cellulose blow-in insulation 50 kg/m <sup>3</sup>	
	Insulating board 45 kg/m <sup>3</sup>	
	Mineral wool	40 kg/m <sup>3</sup> - 100
	Rock wool 30 kg/m <sup>3</sup>	
	+ wood frame / ridge	Metal CW100/50/06
	EGGER Ergoboard	12
F	EGGER DHF	
	EGGER OSB	
G	Gypsum board - not effective in fire protection	
	Gypsum fire board	15
	Gypsum fire board or gypsum fibre board	
H	Gypsum fire board or gypsum fibre board	
	Application area	Drywall
	Fire resistance	EI90
	Fire classification reportt	Classification report MFPA KB 3.2/15-013-4
	Sound insulation Rw(c;ctr)	56 (-3,-8)

