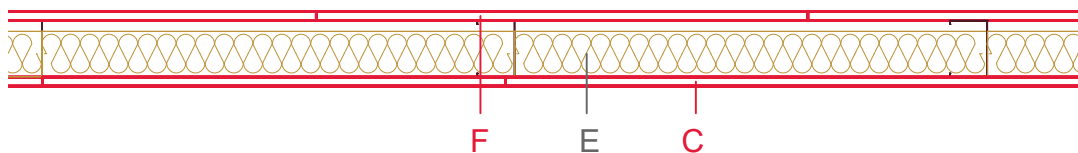


E1401-02



	Material / Layer	Dimensions
A	Gypsum fire board or gypsum fibre board	
	Gypsum board - not effective in fire protection	9,5
B	Gypsum fire board or gypsum fibre board	
	Gypsum fire board or Gypsum fibre board	
C	EGGER OSB	
	EGGER Ergoboard	12
D	Vapour barrier s _d optional	
E	Cellulose blow-in insulation 50 kg/m ³	
	Glass wool 11 kg/m ³	
	Rock wool 30 kg/m ³	
	Cellulose blow-in insulation 50 kg/m ³	
	Insulating board 45 kg/m ³	
	Mineral wool	40 kg/m ³ - 60
	Rock wool 30 kg/m ³	
	+ wood frame / ridge	Metal CW75/50/06
F	EGGER Ergoboard	12
	EGGER DHF	
	EGGER OSB	
G	Gypsum board - not effective in fire protection	9,5
	Gypsum fire board	
	Gypsum fire board or gypsum fibre board	
H	Gypsum fire board or gypsum fibre board	
	Application area	Drywall
	Fire resistance	EI30
	Fire classification report	Classification report MFPA KB 3.2/15-013-3
	Sound insulation R _w (c;ctr)	51 (-4,-10)

