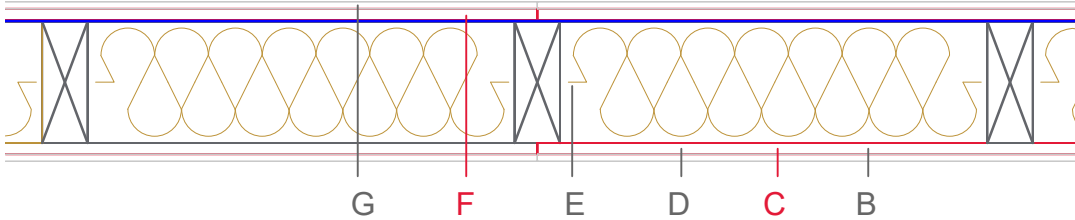


# E1306-02



	Material / Layer	Dimensions
<b>A</b>	Gypsum fire board or gypsum fibre board	
	Gypsum board - not effective in fire protection	9,5
<b>B</b>	Gypsum fire board or gypsum fibre board	
	Gypsum fire board or Gypsum fibre board	
<b>C</b>	EGGER OSB	15
	EGGER Ergoboard	
<b>D</b>	Vapour barrier s <sub>d</sub> optional	approx. 20 m
<b>E</b>	Cellulose blow-in insulation 50 kg/m <sup>3</sup>	160
	Glass wool 11 kg/m <sup>3</sup>	
	Rock wool 30 kg/m <sup>3</sup>	
	Cellulose blow-in insulation 50 kg/m <sup>3</sup>	
	Insulating board 45 kg/m <sup>3</sup>	
	Mineral wool	
	Rock wool 30 kg/m <sup>3</sup>	
	+ wood frame / ridge	60x160
	EGGER Ergoboard	
<b>F</b>	EGGER DHF	
	EGGER OSB	15
<b>G</b>	Gypsum board - not effective in fire protection	9,5
	Gypsum fire board	
	Gypsum fire board or gypsum fibre board	
<b>H</b>	Gypsum fire board or gypsum fibre board	
	Application area	Interior wall
	Fire resistance	REI30
	Fire classification report	Classification report HF Austria 2586/2018/20-BB
	Sound insulation Rw(c;ctr)	43 (-2;-8)

