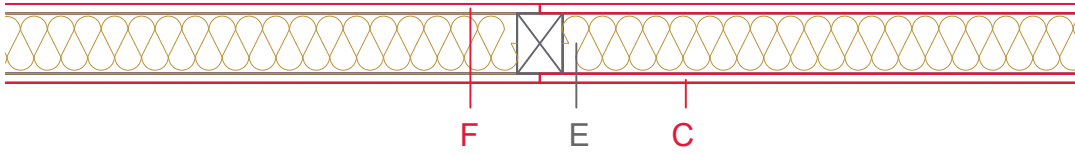


E1301-01



	Material / Layer	Dimensions
A	Gypsum fire board or gypsum fibre board	
	Gypsum board - not effective in fire protection	
B	Gypsum fire board or gypsum fibre board	
	Gypsum fire board or Gypsum fibre board	
C	EGGER OSB	12
	EGGER Ergoboard	
D	Vapour barrier s _d optional	
E	Cellulose blow-in insulation 50 kg/m ³	80
	Glass wool 11 kg/m ³	
	Rock wool 30 kg/m ³	
	Cellulose blow-in insulation 50 kg/m ³	
	Insulating board 45 kg/m ³	
	Mineral wool	
	Rock wool 30 kg/m ³	
	+ wood frame / ridge	40x80
	EGGER Ergoboard	
F	EGGER DHF	
	EGGER OSB	12
G	Gypsum board - not effective in fire protection	
	Gypsum fire board	
	Gypsum fire board or gypsum fibre board	
H	Gypsum fire board or gypsum fibre board	
	Application area	Interior wall
	Fire resistance	REI0
	Fire classification reportt	no
	Sound insulation Rw(c;ctr)	34 (-2;-6) dB

