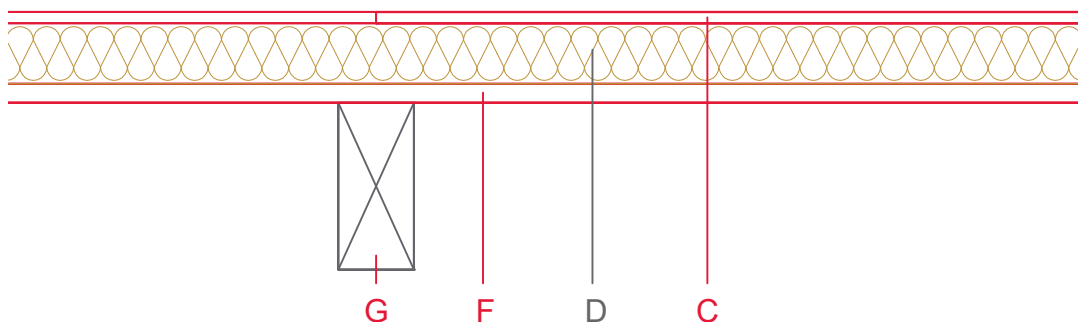


# E2201-03b



|   | Material / Layer                              | Dimensions   |
|---|---|--|
| A | Roofing                                       | x  |
| B | Ventilation                                   | x  |
| C | EGGER DHF                                     | 15   |
|   | EGGER OSB                                     |  |
| D | Foam plastic                                  |  |
|   | Rock wool 30 kg/m <sup>3</sup>                | 80   |
|   | Glass wool 11 kg/m <sup>3</sup>               |  |
|   | Rock wool 30 kg/m <sup>3</sup>                |  |
|   | Cellulose insulation 50 kg/m <sup>3</sup>     |  |
|   | Insulating board 45 kg/m <sup>3</sup>         |  |
| E | Vapour barrier s <sub>d</sub>                 |  |
| F | EGGER OSB                                     | 25   |
|   | Boards or planks T&G                          | 16   |
| G | Insulation normal flammability                |  |
|   | Rock wool 30 kg/m <sup>3</sup>                |  |
|   | + wood frame / ridge                          | n 3-sided combustion, l=1250 mm  |
| H | Battens/form board                            |  |
| K | Gypsum board not effective in fire protection |  |
|   | Gypsum fire board                             |  |
|   | Gypsum fire board or Gypsum fibre board       |  |
|   | Application area                              |  |
|   | Roof design                                   | Above-rafter insulation  |
|   | Fire resistance                               | F30-B  |
|   | Fire classification report                    | Fire resistance F30-B according to DIN 4102-4:2016, table 10.25, row 3 |
|   | Sound insulation Rw(c;ctr)                    | 37 dB  |

