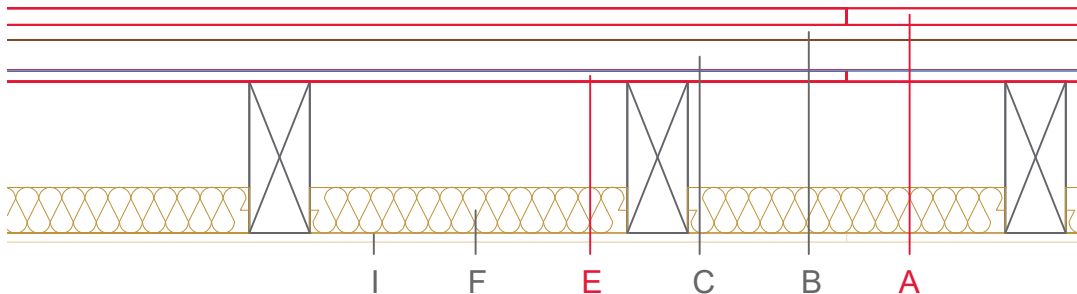


E3601-03



	Material / Layer	Dimensions
	Dry screed Egger OSB	22
A	Mastic asphalt screed	
	Cement screed	
B	Impact-noise insulation	Rock wool 30 kg/m ³ - 15
C	Weighting	Dry fill 60 kg/m ² - 40
D	Drip guard	x
E	EGGER OSB	22
F	Cellulose blow-in insulation 50 kg/m ³	
	Glass wool 11 kg/m ³	
	Rock wool 30 kg/m ³	
	Cellulose blow-in insulation 50 kg/m ³	
	Insulating board 45 kg/m ³	
	Rock wool 30 kg/m ³	60
	+ ceiling beam / Tram	80x200
G	Form board/ spring rail	22 x 80, e=500, spring rail, e=400
	Vapour barrier s _d	
H	EGGER OSB	
I	Gypsum board not effective in fire protection	
	Gypsum fire board	12,5
	Gypsum fire board or Gypsum fibre board	
K	Gypsum fire board or Gypsum fibre board	
	Gypsum fire board or Gypsum fibre board	
	Application area	Open beam ceiling with closed joists
	Fire resistance	F30-B
	Fire classification report	Fire resistance F30-B according to DIN 4102-4, table 10.11, row 2
	Sound insulation R _w (C, C _{tr})	54 dB
	Sound insulation impact sound L _{n,w}	53 dB

