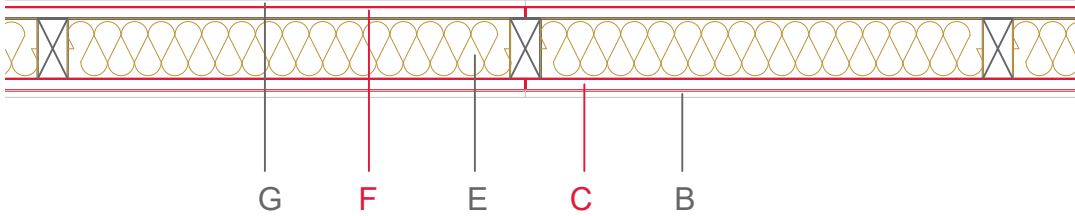


E1310-03



Material / Layer	Dimensions
A Gypsum fire board or gypsum fibre board	
Gypsum board - not effective in fire protection	9,5
B Gypsum fire board or gypsum fibre board	
Gypsum fire board or Gypsum fibre board	
C EGGER OSB	15
EGGER Ergo board	
D Vapour barrier s _d optional	
E Cellulose blow-in insulation 50 kg/m ³	
Glass wool 11 kg/m ³	
Rock wool 30 kg/m ³	
Cellulose blow-in insulation 50 kg/m ³	
Insulating board 45 kg/m ³	
Mineral wool	
Rock wool 30 kg/m ³	80
+ wood frame / ridge	40x80
F EGGER Ergo board	
EGGER DHF	
EGGER OSB	15
G Gypsum board - not effective in fire protection	9,5
Gypsum fire board	
Gypsum fire board or gypsum fibre board	
H Gypsum fire board or gypsum fibre board	
Application area	Interior wall
Fire resistance	F30-B
Fire classification report	Fire resistance F30-B according to DIN 4102-4:2016, table 10.6, Z 1
Sound insulation Rw(c;ctr)	37 (-2,-7) dB

