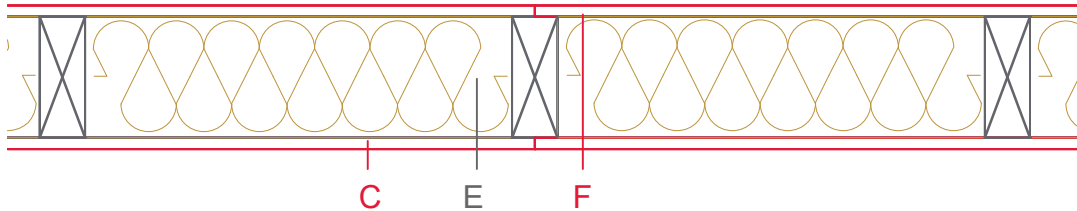


# E1303-02



	Material / Layer	Dimensions
A	Gypsum fire board or gypsum fibre board	
B	Gypsum board - not effective in fire protection	
	Gypsum fire board or gypsum fibre board	2 x 12.5
C	EGGER OSB	15
	EGGER Ergoboard	
D	Vapour barrier s <sub>d</sub> optional	
E	Cellulose blow-in insulation 50 kg/m <sup>3</sup>	
	Glass wool 11 kg/m <sup>3</sup>	
	Rock wool 30 kg/m <sup>3</sup>	
	Cellulose blow-in insulation 50 kg/m <sup>3</sup>	
	Insulating board 45 kg/m <sup>3</sup>	
	Mineral wool	11 kg/m <sup>3</sup> - 60
	Rock wool 30 kg/m <sup>3</sup>	
	+ wood frame / ridge	60x100 + 60x160
F	EGGER Ergoboard	
	EGGER DHF	
	EGGER OSB	15
G	Gypsum board - not effective in fire protection	
	Gypsum fire board	
H	Gypsum fire board or gypsum fibre board	
	Gypsum fire board or gypsum fibre board	
	Application area	Building partition wall
	Fire resistance	REI90
	Fire classification report	Classification report HF Austria 2586/2018/10-BB + 17-BB
	Sound insulation Rw(c;ctr)	49 dB

