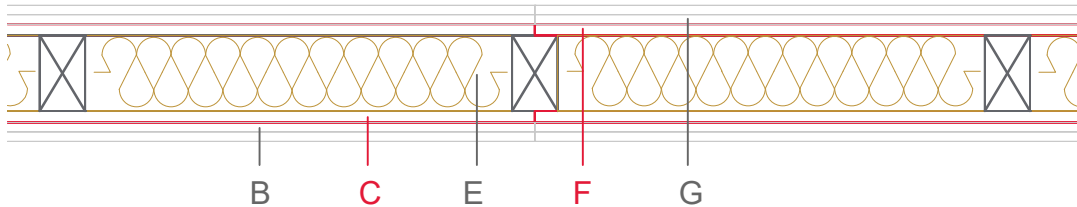


E1215-02a



	Material / Layer	Dimensions
A	Gypsum fire board or gypsum fibre board	
B	Gypsum board - not effective in fire protection	
	Gypsum fire board or gypsum fibre board	2x12.5
C	Gypsum fire board or Gypsum fibre board	
	EGGER OSB	15
D	EGGER Ergo board	
	Vapour barrier s _d optional	
E	Cellulose blow-in insulation 50 kg/m ³	
	Glass wool 11 kg/m ³	
	Rock wool 30 kg/m ³	
	Cellulose blow-in insulation 50 kg/m ³	
	Insulating board 45 kg/m ³	
	Mineral wool	11 kg/m ³ - 60
	Rock wool 30 kg/m ³	
F	+ wood frame / ridge	60x100
	EGGER Ergo board	
	EGGER DHF	
G	EGGER OSB	15
	Gypsum board - not effective in fire protection	
	Gypsum fire board	2x12.5
H	Gypsum fire board or gypsum fibre board	
	Gypsum fire board or gypsum fibre board	
	Application area	Building partition wall
	Fire resistance	REI90
	Fire classification report	Classification report HF Austria 2586/2018/10-BB
	Sound insulation R _w (c;ctr)	59(-2,-10)

