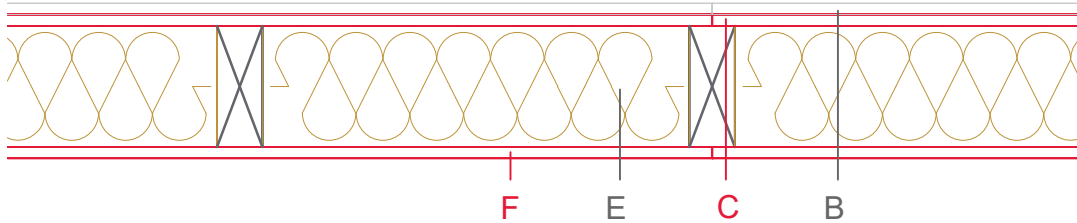


# E1213-02



	Material / Layer	Dimensions
A	Gypsum fire board or gypsum fibre board	
	Gypsum board - not effective in fire protection	
B	Gypsum fire board or gypsum fibre board	
	Gypsum fire board or Gypsum fibre board	15
C	EGGER OSB	15
	EGGER Ergoboard	
D	Vapour barrier $s_d$ optional	
	Cellulose blow-in insulation 50 kg/m <sup>3</sup>	
	Glass wool 11 kg/m <sup>3</sup>	
	Rock wool 30 kg/m <sup>3</sup>	
	Cellulose blow-in insulation 50 kg/m <sup>3</sup>	
E	Insulating board	160
	45 kg/m <sup>3</sup>	
	Mineral wool	
	Rock wool 30 kg/m <sup>3</sup>	
	+ wood frame / ridge	60x160
	EGGER Ergoboard	
F	EGGER DHF	15
	EGGER OSB	
	Gypsum board - not effective in fire protection	
G	Gypsum fire board	
	Gypsum fire board or gypsum fibre board	
H	Gypsum fire board or gypsum fibre board	
	Application area	Building partition wall
	Fire resistance	REI60
	Fire classification report	Classification report HF Austria 2586/2018/23-BB
	Sound insulation $R_w(c;ctr)$	57(-3,-11)

