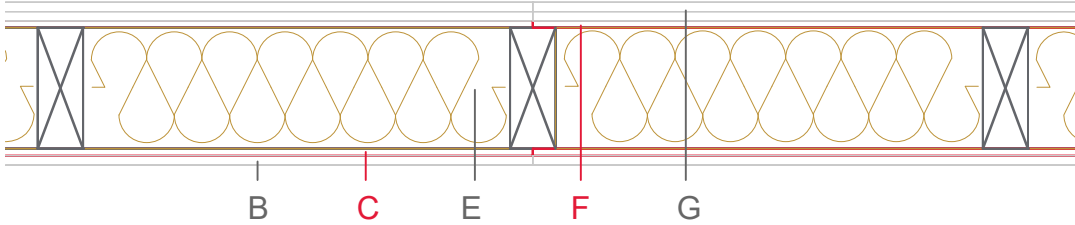


E1202-02



	Material / Layer	Dimensions
A	Gypsum fire board or gypsum fibre board	
B	Gypsum board - not effective in fire protection	
	Gypsum fire board or gypsum fibre board	12,5
C	EGGER OSB	9
	EGGER Ergoboard	
D	Vapour barrier s _d optional	
E	Cellulose blow-in insulation 50 kg/m ³	
	Glass wool 11 kg/m ³	
	Rock wool 30 kg/m ³	
	Cellulose blow-in insulation 50 kg/m ³	
	Insulating board 45 kg/m ³	
	Mineral wool	
	Rock wool 30 kg/m ³	160
	+ wood frame / ridge	
F	EGGER Ergoboard	60x160
	EGGER DHF	
	EGGER OSB	9
G	Gypsum board - not effective in fire protection	
	Gypsum fire board	12,5
H	Gypsum fire board or gypsum fibre board	12,5
	Application area	Building end wall
	Fire resistance	REI30 / REI90
	Fire classification report	Classification report HF Austria 2586/2018/24-BB
	Sound insulation R _w (c;ctr)	R' _w R 57 dB

