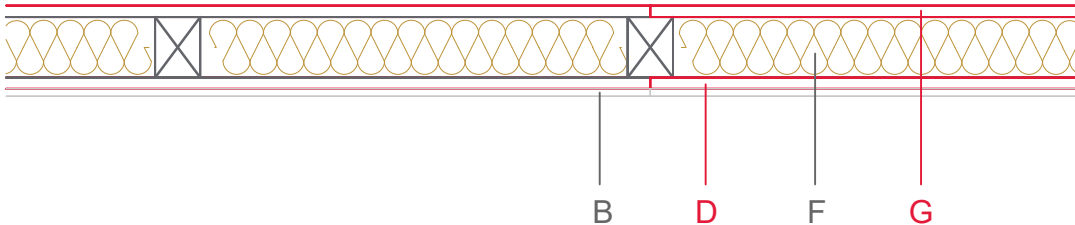


E1152-03



	Material / Layer	Dimensions
A	Gypsum fire board oder Gypsum fibre board	
	Gypsum fire board	
	Gypsum fire board	
B	Gypsum board - not effective in fire protection	9,5
	Gypsum fire board	
	Gypsum fire board oder Gypsum fibre board	
C	Installation level	
D	EGGER OSB	15
E	Vapour barrier s_d	
F	Cellulose blow-in insulation 55 kg/m ³	
	Glass wool 11 kg/m ³	
	Rock wool 30 kg/m ³	
	Cellulose blow-in insulation 50 kg/m ³	
	Insulating board 45 kg/m ³	
	Rock wool 30 kg/m ³	80
	Rock wool 100 kg/m ³	
	+ Wood frame / ridge	40x80
G	EGGER DHF	15
	EGGER OSB	
H	Insulating board	
	Weather protection	Ventilated façade
	Application area	
	Fire resistance	F30-B
	Fire classification report	Fire resistance F30-B according to DIN 4102-4, table 10.6, row 1
	Sound insulation R' _w	R _w ≤ 43 dB

