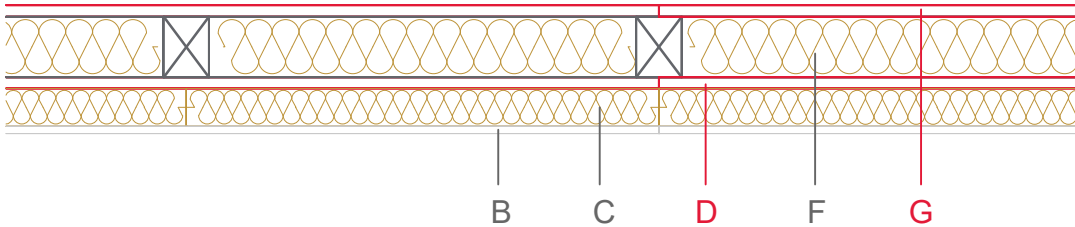


E1152-03b



| | Material / Layer | Dimensions |
|---|---|--|
| A | Gypsum fire board oder Gypsum fibre board | |
| | Gypsum fire board | |
| | Gypsum board - not effective in fire protection | 9,5 |
| B | Gypsum fire board | |
| | Gypsum fire board oder Gypsum fibre board | |
| | Installation level | Rock wool - 50 |
| D | EGGER OSB | 15 |
| E | Vapour barrier s_d | |
| F | Cellulose blow-in insulation 55 kg/m ³ | |
| | Glass wool 11 kg/m ³ | |
| | Rock wool 30 kg/m ³ | |
| | Cellulose blow-in insulation 50 kg/m ³ | |
| | Insulating board 45 kg/m ³ | |
| | Rock wool 30 kg/m ³ | 80 |
| | Rock wool 100 kg/m ³ | |
| | + Wood frame / ridge | 40x80 |
| G | EGGER DHF | 15 |
| | EGGER OSB | |
| H | Insulating board | |
| | Weather protection | Ventilated façade |
| | Application area | |
| | Fire resistance | F30-B |
| | Fire classification report | Fire resistance F30-B according to DIN 4102-4, table 10.6, row 1 |
| | Sound insulation R' _w | R _w ≤43 dB |

