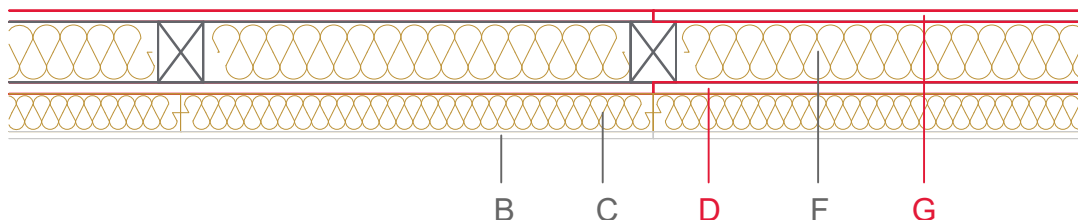


# E1152-03a



	Material / Layer	Dimensions
<b>A</b>	Gypsum fire board oder Gypsum fibre board	
	Gypsum fire board	
	Gypsum board - not effective in fire protection	9,5
<b>B</b>	Gypsum fire board	
	Gypsum fire board oder Gypsum fibre board	
	Gypsum fire board	
<b>C</b>	Installation level	50
<b>D</b>	EGGER OSB	15
<b>E</b>	Vapour barrier $s_d$	
<b>F</b>	Cellulose blow-in insulation 55 kg/m <sup>3</sup>	
	Glass wool 11 kg/m <sup>3</sup>	
	Rock wool 30 kg/m <sup>3</sup>	
	Cellulose blow-in insulation 50 kg/m <sup>3</sup>	
	Insulating board 45 kg/m <sup>3</sup>	
	Rock wool 30 kg/m <sup>3</sup>	80
	Rock wool 100 kg/m <sup>3</sup>	
+ Wood frame / ridge	40x80	
<b>G</b>	EGGER DHF	15
	EGGER OSB	
<b>H</b>	Insulating board	
	Weather protection	Ventilated façade
	Application area	
	Fire resistance	F30-B
	Fire classification report	Fire resistance F30-B according to DIN 4102-4, table 10.6, row 1
	Sound insulation R'w	Rw ≤43 dB

