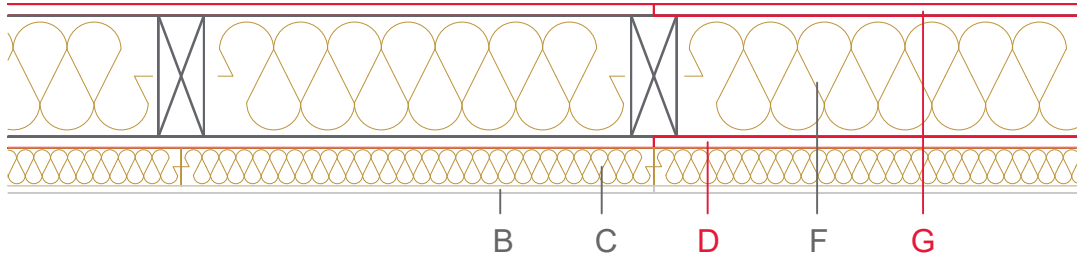


E1151-02a



	Material / Layer	Dimensions
A	Gypsum fire board oder Gypsum fibre board	
	Gypsum fire board	
	Gypsum board - not effective in fire protection	9,5
B	Gypsum fire board	
	Gypsum fire board oder Gypsum fibre board	
C	Installation level	variable insulation - 50mm
D	EGGER OSB	15
E	Vapour barrier s_d	
F	Cellulose blow-in insulation 55 kg/m ³	
	Glass wool 11 kg/m ³	
	Rock wool 30 kg/m ³	
	Cellulose blow-in insulation 50 kg/m ³	
	Insulating board 45 kg/m ³	160
	Rock wool 30 kg/m ³	
	Rock wool 100 kg/m ³	
	+ Wood frame / ridge	60x 160
G	EGGER DHF	15
	EGGER OSB	
H	Insulating board	
	Weather protection	Ventilated façade
	Application area	
	Fire resistance	REI30
	Fire classification report	Classification report HF Austria 2586/2018/20-BB
	Sound insulation R' _w	43 dB

