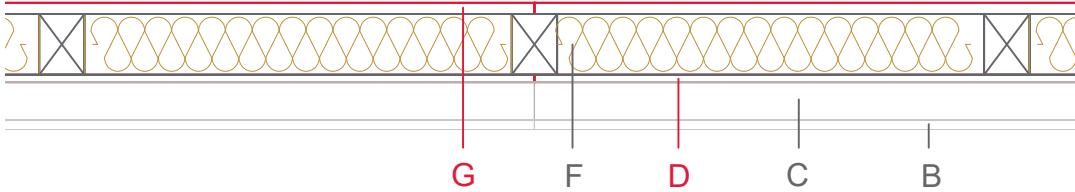


# E1105-03a



|   | Material / Layer                                  | Dimensions                                    |
|---|---|---|
| A | Gypsum fire board oder Gypsum fibre board         |   |
|   | Gypsum fire board                                 |   |
|   | Gypsum board - not effective in fire protection   | 12,5  |
| B | Gypsum fire board                                 |   |
|   | Gypsum fire board oder Gypsum fibre board         |   |
| C | Installation level                                | without                                       |
| D | EGGER OSB   | 10  |
| E | Vapour barrier $s_d$                              |   |
| F | Cellulose blow-in insulation 55 kg/m <sup>3</sup> |   |
|   | Glass wool 11 kg/m <sup>3</sup>                   |   |
|   | Rock wool 30 kg/m <sup>3</sup>                    |   |
|   | Cellulose blow-in insulation 50 kg/m <sup>3</sup> |   |
|   | Insulating board 45 kg/m <sup>3</sup>             |   |
|   | Rock wool 30 kg/m <sup>3</sup>                    | 80  |
|   | Rock wool 100 kg/m <sup>3</sup>                   |   |
|   | + Wood frame / ridge                              | 60x100  |
| G | EGGER DHF   | 15  |
|   | EGGER OSB   |   |
| H | Insulating board                                  |   |
|   | Weather protection                                | Ventilated façade                             |
|   | Application area                                  | Exterior wall                                 |
|   | Fire resistance                                   | F30-B   |
|   | Fire classification report                        | Fire resistance F30-B according to DIN 4102-4 |
|   | Sound insulation R' <sub>w</sub>                  | ≤44 dB  |

