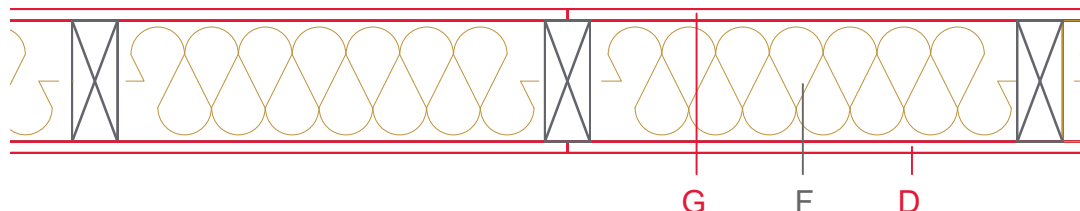


E1103-02



| | Material / Layer | Dimensions |
|---|---|---|
| A | Gypsum fire board oder Gypsum fibre board | |
| | Gypsum fire board | |
| | Gypsum fire board | |
| B | Gypsum board - not effective in fire protection | |
| | Gypsum fire board | |
| | Gypsum fire board oder Gypsum fibre board | |
| C | Installation level | |
| D | EGGER OSB | 15 |
| E | Vapour barrier s_d | |
| F | Cellulose blow-in insulation 55 kg/m ³ | |
| | Glass wool 11 kg/m ³ | |
| | Rock wool 30 kg/m ³ | |
| | Cellulose blow-in insulation 50 kg/m ³ | |
| | Insulating board 45 kg/m ³ | 160 |
| | Rock wool 30 kg/m ³ | |
| | Rock wool 100 kg/m ³ | |
| | + Wood frame / ridge | |
| G | EGGER DHF | 15 |
| | EGGER OSB | |
| H | Insulating board | |
| | Weather protection | |
| | Application area | Exterior wall |
| | Fire resistance | REI30 |
| | Fire classification report | Classification report HF Austria 2586/2018/20-BB |
| | Sound insulation R'w | ≤ 41 dB |

