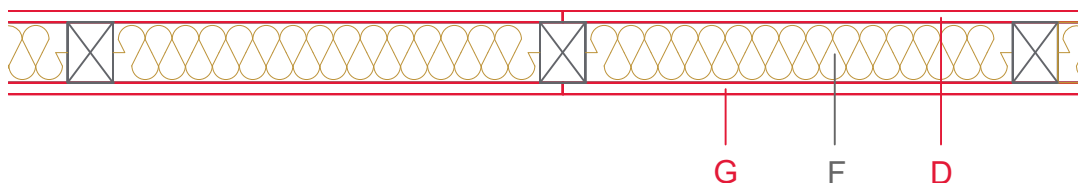


E1101-03



	Material / Layer	Dimensions
A	Gypsum fire board oder Gypsum fibre board	
	Gypsum fire board	
	Gypsum fire board	
B	Gypsum board - not effective in fire protection	
	Gypsum fire board	
	Gypsum fire board oder Gypsum fibre board	
C	Installation level	
D	EGGER OSB	15
E	Vapour barrier s_d	
F	Cellulose blow-in insulation 55 kg/m ³	
	Glass wool 11 kg/m ³	
	Rock wool 30 kg/m ³	
	Cellulose blow-in insulation 50 kg/m ³	
	Insulating board 45 kg/m ³	
	Rock wool 30 kg/m ³	80
	Rock wool 100 kg/m ³	
	+ Wood frame / ridge	
G	EGGER DHF	15
	EGGER OSB	
H	Insulating board	
	Weather protection	
	Application area	Exterior wall
	Fire resistance	F30-B
	Fire classification report	Fire resistance F30-B according to DIN 4102-4:2016, table 10.7, row 1
	Sound insulation R'w	≤ 37 dB

