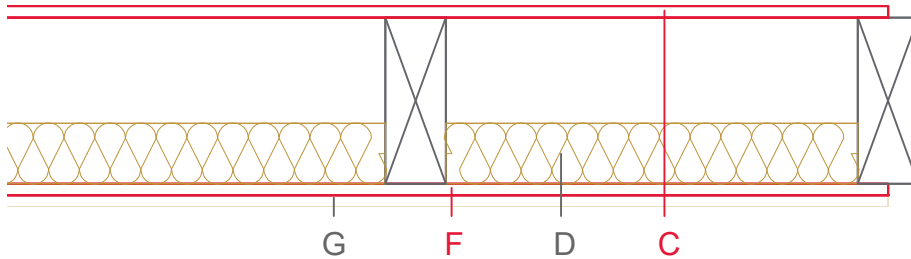


E2103-03



	Material / Layer	Dimensions
A	Roofing	x
B	Ventilation	x
C	EGGER DHF	15
	EGGER OSB	
D	Cellulose blow-in insulation 50 kg/m ³	
	Glass wool 11 kg/m ³	
	Rock wool 30 kg/m ³	
	Cellulose insulation 50 kg/m ³	
	Insulating board 45 kg/m ³	
	Rock wool 30 kg/m ³	80
	+ wood frame / ridge	80x220
E	Vapour barrier s _d	
F	EGGER OSB	15
G	Gypsum board not effective in fire protection	
	Gypsum fire board	15
	Gypsum fire board or Gypsum fibre board	
H	Gypsum fire board or Gypsum fibre board	
Application area		
Roof design	Full rafter insulation	
Fire resistance	F30-B	
Fire classification report	Fire resistance F30-B according to DIN 4102-4:2016, table 10.20, row 10	
Sound insulation Rw(c;ctr)	40 dB	
Sound classification report		

