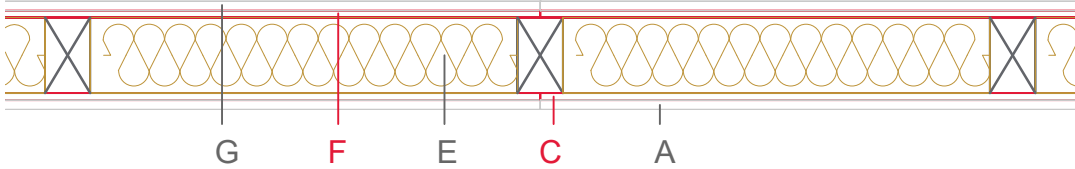


E1307-02



| | Material / Layer | Dimensions |
|---|---|---|
| A | Gypsum fire board or gypsum fibre board | 12,5 |
| B | Gypsum board - not effective in fire protection | |
| | Gypsum fire board or gypsum fibre board | |
| C | EGGER OSB | 9 |
| | EGGER Ergoboard | |
| D | Vapour barrier s _d optional | approx. 5 m |
| E | Cellulose blow-in insulation 50 kg/m ³ | 100 |
| | Glass wool 11 kg/m ³ | |
| | Rock wool 30 kg/m ³ | |
| | Cellulose blow-in insulation 50 kg/m ³ | |
| | Insulating board 45 kg/m ³ | |
| | Mineral wool | |
| | Rock wool 30 kg/m ³ | |
| | + wood frame / ridge | 60x100 |
| F | EGGER Ergoboard | |
| | EGGER DHF | |
| | EGGER OSB | 9 |
| G | Gypsum board - not effective in fire protection | |
| | Gypsum fire board | |
| | Gypsum fire board or gypsum fibre board | 12,5 |
| H | Gypsum fire board or gypsum fibre board | |
| | Application area | Interior wall |
| | Fire resistance | REI30 |
| | Fire classification report | Classification report HF Austria 2586/2018/23-BB |
| | Sound insulation Rw(c;ctr) | 34 (-2,-6) dB |

